

PRODUCT NUMBER
SEE SHEET 4

R1.25
4X

POS. T37

A

B

25.50

28.60

POS. A2

POS. A1

53.75±0.15

M

P

POS. A1 MARKER

PICK-UP CAP

(0.55)

0.20

Ø 0.76 SOLDER BALLS

⊕ Ø 0.30 P M

666X

SEE NOTE 2

13.94±0.25

12.64±0.12

Copyright FCI.

C

D

www.fciconnect.com			surface 3.2 ASME Y14.5	tolerance std ASME Y14.5	projection ASME Y14.5	MM
			TOLERANCES UNLESS OTHERWISE SPECIFIED			
Dr	T. BRUNGARD	2005-04-05	ANGULAR	0.X	±.3	size A4
Eng	D. HARPER	2005-04-05	LINEAR	0.XX	±.10	Scale 1:1
Chr	D. HARPER	2005-04-05	0°	0.XXX	±.050	ECN V08-0198
Appr	D. HARPER	2005-04-05	Product family GIG-Array		Spec ref -	
			GIG-Array, PLUG ASSEMBLY		10055143	
			13mm, 296 SIGNAL POSITION		Rev. F	
			catalog no -		CUSTOMER sheet 1 of 4	

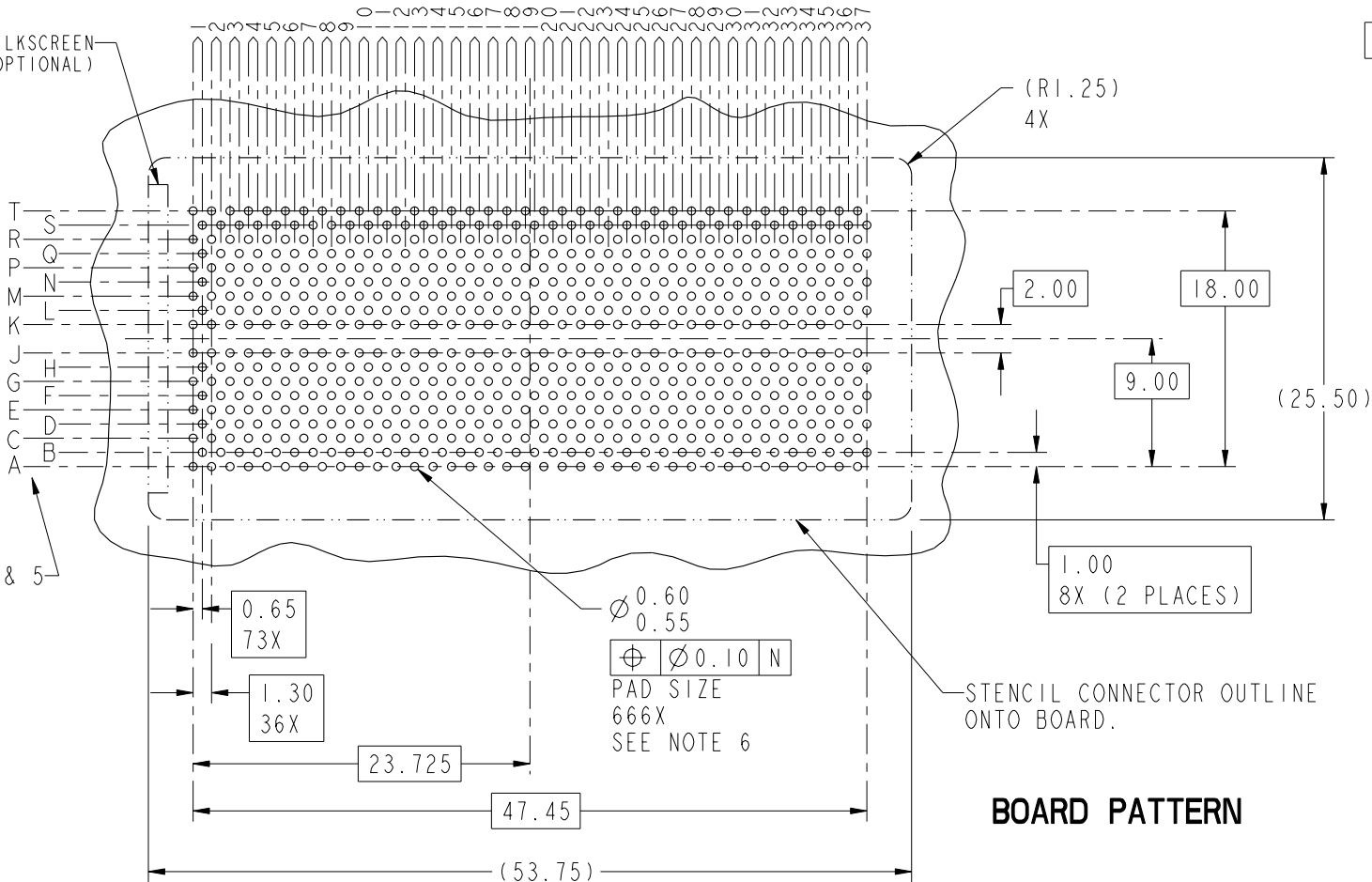
rev	ecn no	dr	date
A	V05-0321	TAB	2005-04-08
B	V06-1009	LP	2005-11-04
C	V06-0230	LP	2006-03-27
D	V06-0558	LP	2006-06-21
E	V07-0440	LP	2007-07-09
F	V08-0198	HTB	2008-04-28
-	-	-	-

PRODUCT NUMBER
SEE SHEET 4

KEY ORIENTATION SILKSCREEN
(OPTIONAL)

④ CONTACTS IN
ROWS J & K ARE
TIED TOGETHER
(COMMONED)

SEE NOTES 4 & 5



STENCIL CONNECTOR OUTLINE
ONTO BOARD.

BOARD PATTERN



FCI
GIG-Array, PLUG ASSEMBLY
13mm, 296 SIGNAL POSITION
catalog no

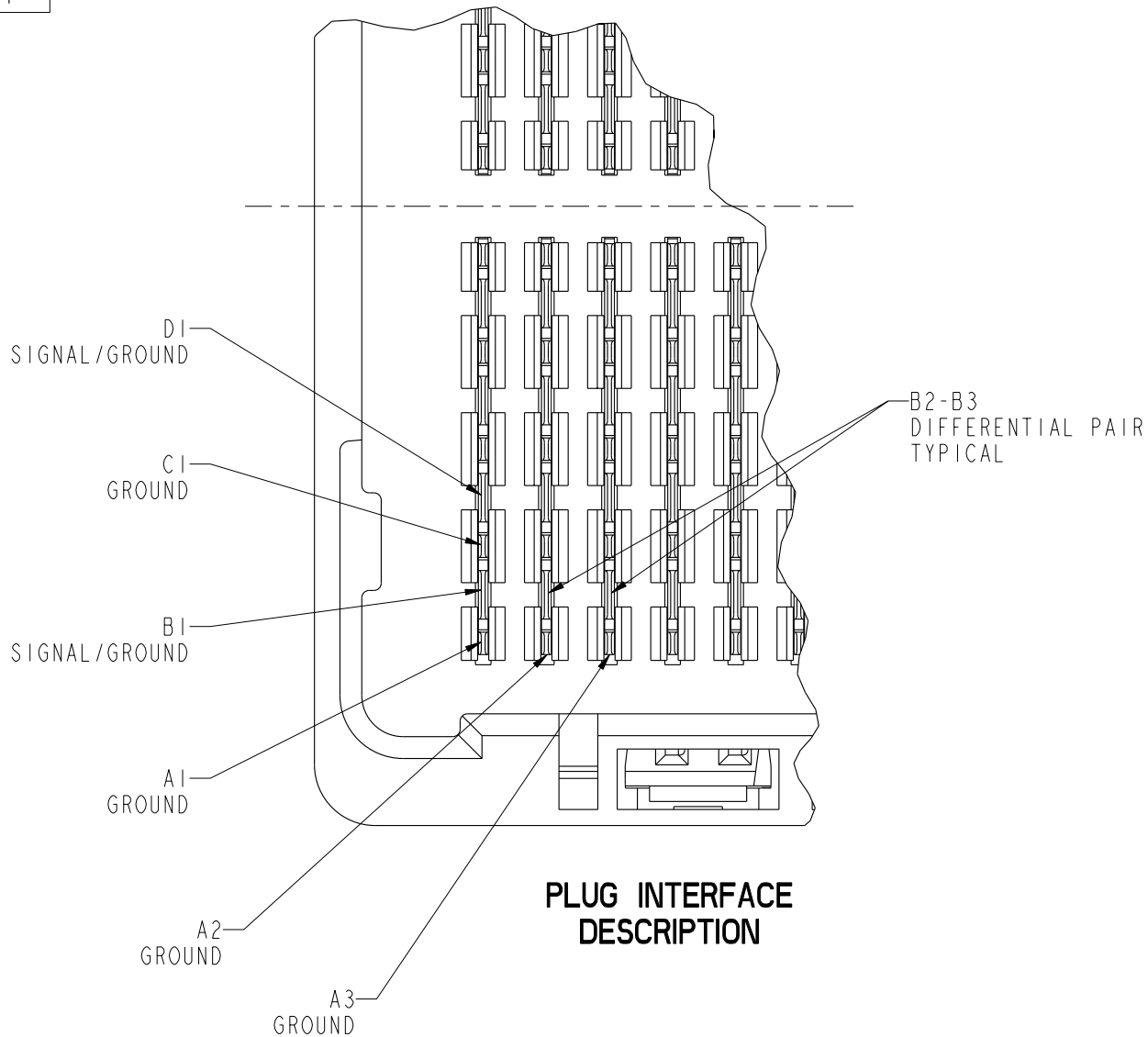
dwg no
10055143
CUSTOMER

Rev.
F

sheet 2 of 4



PRODUCT NUMBER
SEE SHEET 4



**PLUG INTERFACE
DESCRIPTION**



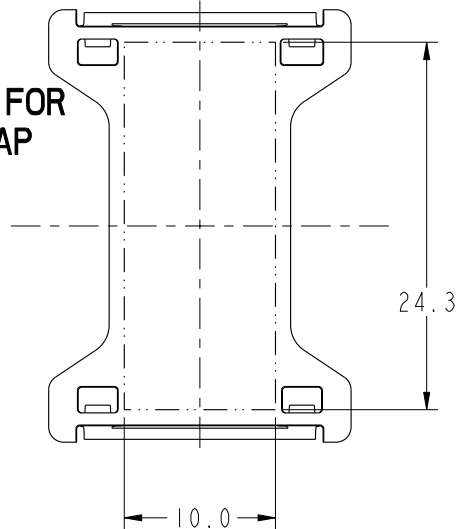
Copyright FCI.

	title GIG-Array, PLUG ASSEMBLY 13mm, 296 SIGNAL POSITION	dwg no 10055143	Rev. F
	catalog no -	CUSTOMER	sheet 3 of 4

REV F - 2006-04-17

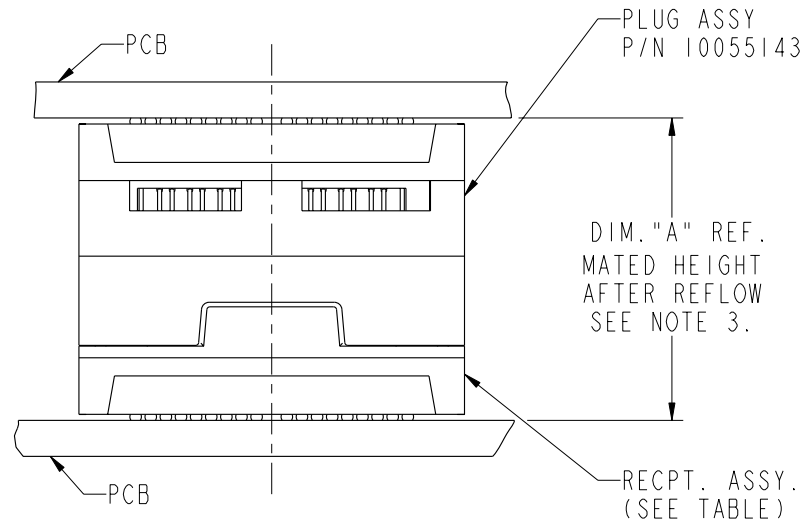
PRODUCT NUMBER	SOLDER BALL
10055143-001	SnPb
10055143-001LF	SnAgCu LEAD FREE SEE NOTE 7 8

FLAT AREA FOR PICK-UP CAP



NOTES:

- ① MAT'L:
HOUSING: LCP
CONTACT: COPPER ALLOY
PLATING (CONTACT): Au OVER Ni.
UL RATING: 94 V-0
SOLDER BALL: (SEE TABLE) EUTECTIC SnPb OR LEADFREE 95.5 Sn/4Ag/0.5Cu
- ② SOLDER BALLS WILL NOT BE PERFECT SPHERICAL SHAPE DUE TO REFLOW ATTACHMENT.
- ③ MATED HEIGHT EFFECTED BY CUSTOMERS' PCB PAD SIZE, PLATING, SOLDER REFLOW PROFILE & SOLDER PASTE.
- ④ CONTACTS IN ROWS A,C,E,G,J,K,M,P,R AND T ARE SINGLE BEAM CONTACTS, TYPICALLY USED AS GROUND PINS. (NOTE: CONTACTS IN ROWS J & K ARE TIED TOGETHER [COMMONED])
- ⑤ CONTACTS IN ROWS B,D,F,H,L,N,O AND S ARE DUAL BEAM CONTACTS, TYPICALLY USED AS SIGNAL PINS.



END VIEW OF MATED CONNECTORS

DIM. "A"	RECPT. ASSY. P/N
28	55733
18	55701

- ⑥ SPECIFIED POSITIONAL TOLERANCE DEFINES PAD TO PAD LOCATION WITHIN LAND PATTERN. POSITIONAL TOLERANCE OF LAND PATTERN TO FUDICIAL MARKS OR PCB DATUMS SHALL BE DEFINED BY CUSTOMER. FOR RECOMMENDED PRODUCT APPLICATION AND PCB DESIGN DETAILS, SEE DOC. NO. GS-20-016.
- ⑦ FOR PROPER APPLICATION FOLLOW FCI APPLICATION SPECIFICATION GS-20-033 LEADFREE SOLDER BALLS WILL NOT SOLDER PROPERLY IN A LEADED SOLDER PROCESS DUE TO A HIGHER REFLOW TEMPERATURE. LEADFREE PRODUCT IS THEREFORE NOT BACKWARDS COMPATIBLE WITH LEADED OR SOME SOLDERING APPLICATIONS. REFERENCE FCI APPLICATION SPECIFICATION.
- ⑧ THIS PRODUCT MEETS THE EUROPEAN UNION DIRECTIVES AND OTHER COUNTRY REGULATIONS AS DESCRIBED IN GS-22-008 PRODUCT MEETING THIS DIRECTIVE IS IDENTIFIED IN THE LOT CODE NUMBER MARKED ON EACH PART BY HAVING AN "X" IN THE SEVENTH CHARACTER POSITION.

FCI	title	GIG-Array, PLUG ASSEMBLY	dwg no	10055143	Rev.	F
	part no	13mm, 296 SIGNAL POSITION				
	catalog no	-	CUSTOMER	sheet 4 of 4		

